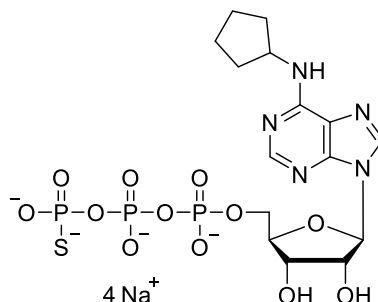


## Technical Information about 6-cPe-ATP- $\gamma$ -S

Update: July 23, 2024 ss



**Abbreviation:** **6-cPe-ATP- $\gamma$ -S**

Formula	CAS No.	Molecular Weight	UV	BIOLOG Cat. No.
C <sub>15</sub> H <sub>24</sub> N <sub>5</sub> O <sub>12</sub> P <sub>3</sub> S (free acid)	[pending]	591.4 (free acid)	$\lambda_{\max}$ 270 nm / $\epsilon$ 19900 / pH 7	C 116

**Name:** N<sup>6</sup>-Cyclopentyladenosine-5'-O-(3-thiotriphosphate), sodium salt

**Description:** 6-cPe-ATP- $\gamma$ -S is an analogue of adenosine-5'-O-triphosphate (ATP) in which one of the non-bridging oxygens at the  $\gamma$ -phosphate is replaced by sulphur. In addition, one hydrogen of the 6-amino group has been substituted by a cyclopentyl moiety.

**Properties:** 6-cPe-ATP- $\gamma$ -S is useful for specific interaction with modified receptor proteins and can be used in studies on kinase-substrate relationships (chemical genetics).

Related structures: 6-Bn-ATP- $\gamma$ -S (BIOLOG Cat. No. B 072), 6-cHe-ATP- $\gamma$ -S (BIOLOG Cat. No. C 127), 6-Fu-ATP- $\gamma$ -S (BIOLOG Cat. No. F 008), 6-(1-MeBu)-ATP- $\gamma$ -S (BIOLOG Cat. No. M 074), 6-Phe-ATP- $\gamma$ -S (BIOLOG Cat. No. P 044), 6-PhEt-ATP- $\gamma$ -S (BIOLOG Cat. No. P 026).

**Specification:** Sodium salt in aqueous solution (10 mM). The free acid or other salt forms are available upon request. Micro molar quantities are determined by UV at  $\lambda_{\max}$ . When opening the tube please make sure that no liquid is lost within the cap. A short spin-down in a bench centrifuge is recommended before use.

**Purity:** Typical analysis is better than 95% (HPLC / UV / 270 nm). The product is not sterile and has not been tested for endotoxins.

**Stability and Storage:** 6-cPe-ATP- $\gamma$ -S is most stable when stored as aqueous solution in the freezer (-20° Celsius necessary, -80° recommended), however, at ambient temperature the compound slowly starts to decompose. Thus, in order to maintain its original high quality it is recommended to allow thawing only before using the product. If you will not use up the vial with one application, please aliquot the contents of the vial in order to avoid repeated freeze/thaw cycles for the rest. When making such aliquots be sure to operate quickly and to freeze the vial again as soon as possible. For stability reasons it is essential that the pH value of the product solution never drops below 7 which can be achieved by addition of a suitable buffer (pH 7 - 9).

**Toxicity and Safety:** Since nucleoside triphosphates have multiple tasks in every organism, it is likely that ATP analogues will interfere with many cell regulation processes *in vivo*. However, due to the rather small quantities to work with, no health hazards have been reported. Nevertheless please keep in mind, that the *in vivo* properties of this compound are not sufficiently characterized up to now. Avoid skin contact or ingestion and allow only trained personnel to handle the product.

Our products are designed, developed and sold for research purposes only! They are intended for *in vitro* and nonhuman *in vivo* laboratory applications. Any other use requires approval of health authorities.

**Not for drug, household or related uses!**

### Selected References for 6-cPe-ATP- $\gamma$ -S:

Cibrián Uhalte, E.; Kirchner, M.; Hellwig, N.; Allen, J.J.; Donat, S.; Shokat, K.M.; Selbach, M.; Abdelilah-Seyfried, S., *PLoS One*; **7**, e40000 (2012): "In Vivo Conditions to Identify Prkci Phosphorylation Targets Using the Analog-sensitive Kinase Method in Zebrafish"

**Selected References for the Related Compound 6-cPe-ATP and the "Chemical Genetics Approach":**

- Allen, J.J.; Li, M.; Brinkworth, C.S.; Paulson, J.L.; Wang, D.; Hübner, A.; Chou, W.-H.; Davis, R.J.; Burlingame, A.L.; Messing, R.O.; Katayama, C.D.; Hedrick, S.M.; Shokat, K.M., *Nature Methods*, **4**, 511 - 516 (2007): "A Semisynthetic Epitope for Kinase Substrates"
- Allen, J.J.; Lazerwith, S.E.; Shokat, K.M., *J. Am. Chem. Soc.*, **127**, 5288 - 5289 (2005): "Bio-Orthogonal Affinity Purification of Direct Kinase Substrates"
- Kumar, N.V.; Eblen, S.T.; Weber, M.J., *Methods*, **32**, 389 - 397 (2004): "Identifying Specific Kinase Substrates through Engineered Kinases and ATP Analogs"
- Wan, L.; de los Santos, T.; Zhang, C.; Shokat, K.; Hollingworth, N.M., *Mol. Biol. Cell.*, **15**, 11 - 13 (2004): "Mek1 Kinase Activity Functions Downstream of *RED1* in the Regulation of Meiotic Double Strand Break Repair in Budding Yeast"
- Hindley, A.D.; Park, S.; Wang, L.; Shah, K.; Wang, Y.; Hu, X.; Shokat, K.M.; Kolch, W.; Sedivy, J.M.; Yeung, K.C., *FEBS Lett.*, **556**, 26 - 34 (2004): "Engineering the Serine/Threonine Protein Kinase Raf-1 to Utilize an Orthogonal Analogue of ATP Substituted at the N<sup>6</sup> Position"
- Ulrich, S.M.; Kenski, D.M.; Shokat, K.M., *Biochemistry*, **42**, 7915 - 7921 (2003): "Engineering a "Methionine Clamp" into Src Family Kinases Enhances Specificity toward Unnatural ATP Analogues"
- Eblen, S.T.; Kumar, V.; Shah, K.; Henderson, M.J.; Watts, C.K.W.; Shokat, K.M., *J. Biol. Chem.*, **278**, 14926 - 14935 (2003): "Identification of Novel ERK2 Substrates through Use of an Engineered Kinase and ATP Analogs"
- Gillespie, P.G.; Gillespie, S.K.H.; Mercer, J.A.; Shah, K.; Shokat, K.M., *J. Biol. Chem.*, **274**, 31373 - 31381 (1999): "Engineering of the Myosin-I $\beta$  Nucleotide-binding Pocket to Create Selective Sensitivity to N<sup>6</sup>-modified ADP Analogs"
- Liu, Y.; Shah, K.; Yang, F.; Witucki, L.; Shokat, K.M., *Chem. Biol.*, **5**, 91 - 101 (1998): "Engineering Src Family Protein Kinases with Unnatural Nucleotide Specificity"
- Shah, K.; Liu, Y.; Deirmengian, C.; Shokat, K.M., *Proc. Natl. Acad. Sci. USA*, **94**, 3565 - 3570 (1997): "Engineering Unnatural Nucleotide Specificity for Rous Sarcoma Virus Tyrosine Kinase to Uniquely Label its Direct Substrates"