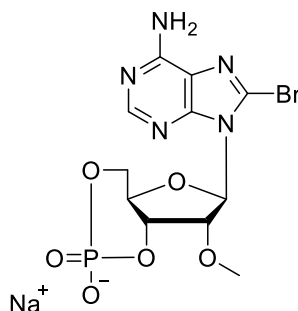


Technical Information about 8-Bromo-2'-O-methyl-cAMP

Potent, specific and membrane-permeant activator of the Epac cAMP receptor

Update: January 08, 2021 HU



Abbreviation: **8-Br-2'-O-Me-cAMP**

Formula	CAS No.	Molecular Weight	UV	BIOLOG Cat. No.
C ₁₁ H ₁₂ BrN ₅ O ₆ P·Na	[612513-13-0]	444.1	λ _{max} 264 nm / ε 17000 / pH 7	B 022

Name: 8- Bromo- 2'- O- methyladenosine- 3', 5'- cyclic monophosphate (8-Br-2'-O-Me-cAMP)

Description: 8-Br-2'-O-Me-cAMP is an analogue of the natural signal molecule cyclic AMP in which the hydrogen in position 8 of the heterocyclic nucleobase is replaced by bromine. In addition, the ribose 2'-hydroxy group has been methylated.

Properties: 8-Br-2'-O-Me-cAMP is a potent stimulator of exchange factors directly activated by cAMP (Epac or cAMP-GEF), a newly discovered receptor for cyclic AMP.

Since a free 2'-ribose hydroxyl group in cyclic AMP is essential for stimulation of cAMP-dependent protein kinase (PKA), the methylated structure of 8-Br-2'-O-Me-cAMP is an extremely poor PKA activator and allows for specific discrimination between both signalling pathways.

Specification: Lyophilized or crystallized sodium salt. The free acid or other salt forms are available upon request. Equal concentrations of 8-Br-2'-O-Me-cAMP can appear very different in volume due to sensitivity of the lyophilized form to humidity. The compound can even contract to small volume droplets. Normally the product is located in the conical bottom of the tube. Micromolar quantities are determined by UV at λ_{max}.

Purity: Typical analysis is better than 98% (HPLC / UV / 264 nm). The product is not sterile and has not been tested for endotoxins.

Stability and Storage: 8-Br-2'-O-Me-cAMP is chemically rather stable. Nevertheless, we recommend that the compound should be stored in the freezer, for longer storage periods preferably in freeze-dried form. Since UV radiation develops a fluorescent impurity, which can disturb in fluorescence assays, avoid bright light during handling and experiments.

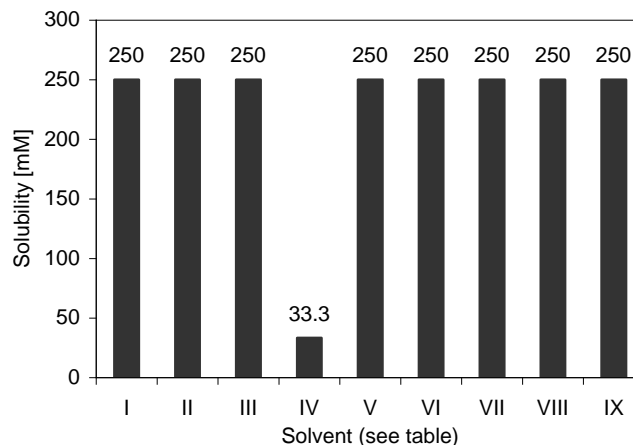
Toxicity and Safety: Since cyclic AMP has multiple tasks in every organism it is very likely that lipophilic cAMP analogues will interfere with many cell regulation processes *in vivo*. However, due to the rather small quantities to work with no health hazards have been reported. Nevertheless please keep in mind that the *in vivo* properties of this compound are not sufficiently characterized up to now. Avoid skin contact or ingestion and allow only trained personnel to handle the product.

Our products are designed, developed and sold for research purposes only. They are intended for *in vitro* and nonhuman *in vivo* laboratory applications. Any other use requires approval of health authorities.

Not for drug, household or related uses!

Solubility: Detailed information on the solubility of 8-Br-2'-O-Me-cAMP in water and various buffers are listed in the solubility chart below. Concentrations have been determined at ambient temperature and can be considered as minimum concentrations usually obtainable, however, slight batch-to-batch variations cannot be ruled out. When opening the tube please make sure that no substance is lost within the cap. Please rinse tube walls carefully and preferably use ultrasonic or vortex to achieve total and uniform mixing.

No.	Solvent	Solubility [mM]
I	H ₂ O	250
II	DMSO	250
III	DMF	250
IV	Ethanol 96%	33.3
V	Methanol	250
VI	PBS, pH 7.4	250
VII	100 mM Na ₂ HPO ₄ , pH 7.0	250
VIII	25 mM HEPES/NaOH, pH 7.2	250
IX	25 mM Tris/HCl, pH 7.4	250



Selected References for 8-Br-2'-O-Me-cAMP:

Börner, S.; Schwede, F.; Schlipp, A.; Berisha, F.; Calebiro, D.; Lohse, M.J.; Nikolaev, V.O., *Nat. Protoc.*, **6**, 427 - 438 (2011): "FRET Measurements of Intracellular cAMP Concentrations and cAMP Analog Permeability in Intact Cells"

Voisin, P.; Bernard, M., *J. Neurochem.*, **110**, 318 - 327 (2009): "Cyclic AMP-dependent Activation of Rhodopsin Gene Transcription in Cultured Retinal Precursor Cells of Chicken Embryo"

Li, J.; O'Connor, K.L.; Cheng, X.; Mei, F.C.; Uchida, T.; Townsend, C.M.; Evers, B.M., *Mol. Endocrinol.*, **21**, 159 - 171 (2007): "Cyclic AMP-stimulated Neurotensin Secretion is Mediated Through Rap1 Downstream of Both Epac and PKA Signaling Pathways"

Traver, S.; Marien, M.; Martin, E.; Hirsch, E.C.; Michel, P., *Mol. Pharmacol.*, **70**, 30 - 40 (2006): "The Phenotypic Differentiation of Locus Coeruleus Noradrenergic Neurons Mediated by BDNF is Enhanced by Corticotropin Releasing Factor Through the Activation of a cAMP-dependent Signaling Pathway"

Christensen, A.E.; Selheim, F.; de Rooij, J.; Dremier, S.; Schwede, F.; Dao, K.K.; Martinez, A.; Maenhaut, C.; Bos, J.L.; Genieser, H.-G.; Døskeland, S.O., *J. Biol. Chem.*, **278**, 35394 - 35402 (2003): "cAMP analog mapping of Epac1 and cAMP-kinase. Discriminating analogs demonstrate that Epac and cAMP-kinase act synergistically to promote PC-12 cell neurite extension"

Selected References for specific Epac agonists:

Dao, K.K.; Teigen, K.; Kopperud, R.; Hodneland, E.; Schwede, F.; Christensen, A.E.; Martinez, A.; Døskeland, S.O., *J. Biol. Chem.*, **281**, 21500 - 21511 (2006): "Epac1 and cAMP-dependent Protein Kinase Holoenzyme Have Similar cAMP Affinity, but Their cAMP Domains Have Distinct Structural Features and Cyclic Nucleotide Recognition"

Eliasson, L.; Ma, X.S.; Renström, E.; Barg, S.; Berggren, P.O.; Galvanovskis, J.; Gromada, J.; Jing, X.J.; Lundquist, I.; Salehi, A.; Sewing, S.; Rorsman, P., *J. Gen. Physiol.*, **121**, 181 - 197 (2003): "SUR1 Regulates PKA-independent cAMP-induced Granule Priming in Mouse Pancreatic B-cells"

Rangarajan, S.; Enserink J.M.; Kuiperij, H.B.; de Rooij, J.; Price, L.S.; Schwede, F.; Bos, J.L., *J. Cell Biol.*, **160**, 487 - 493 (2003): "Cyclic AMP Induces Integrin-mediated Cell Adhesion Through Epac and Rap1 Upon Stimulation of the β_2 -Adrenergic Receptor"

Kang, G.; Joseph, J.W.; Chepurny, O.G.; Monaco, M.; Wheeler, M.B.; Bos, J.L.; Schwede, F.; Genieser, H.-G.; Holz, G.G., *J. Biol. Chem.*, **278**, 8279 - 8285 (2003): "Epac-selective cAMP Analog 8-pCPT-2'-O-Me-cAMP as a Stimulus for Ca²⁺-induced Ca²⁺ Release and Exocytosis in Pancreatic β -Cells"

Christensen, A.E.; de Rooij, J.; Kopperud, R.; Nilsen, O.K.; Dao, K.K.; Schwede, F.; Bos, J.L.; Genieser, H.-G.; Døskeland, S.O., Abstracts of the 13th Protein Kinase Symposium, Oslo/Norway, 2002: "Comparison of the cAMP Binding Sites of EPAC-1 and cAMP-Kinase"

Enserink J.M.; Christensen, A.E.; de Rooij, J.; van Triest, M.; Schwede, F.; Genieser, H.-G.; Døskeland, S.O.; Blank, J.L.; Bos, J.L., *Nature Cell Biol.*, **4**, 901 - 906 (2002): "A novel Epac-specific cAMP Analog Demonstrates Independent Regulation of Rap1 and ERK"