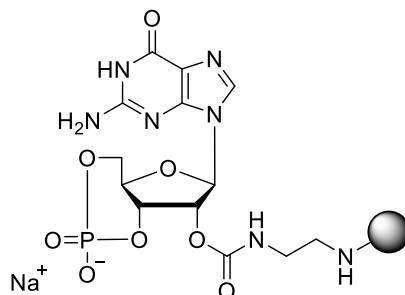


Technical Information about 2'-AEC-cGMP-Agarose

Update: September 07, 2018 HU



Abbreviation: 2'-AEC-cGMP-Agarose

BIOLOG Cat. No.: A 196

Description: In 2'-AEC-cGMP-Agarose 2'-O-(2-Aminoethylcarbamoyl)guanosine-3', 5'-cyclic monophosphate (2'-AEC-cGMP, Cat. No. A 075) has been immobilized as an affinity ligand by the hydroxysuccinimide technique. 2'-AEC-cGMP is an analogue of the parent second messenger cyclic GMP in which the ribose 2'-hydroxy group carries the aminoethylcarbamoyl spacer for attachment.

Properties: 2'-AEC-cGMP-Agarose is a gel for affinity chromatography of various cGMP responsive proteins, especially those which tolerate modification of the 2'-ribose hydroxy group, such as certain phosphodiesterases.

Related Products: This type of gel is also offered with a longer aminoethylcarbamoyl spacer (2'-AHC-cGMP-Agarose, Cat. No. A 059). The PDE-resistant versions of 2'-AHC-cGMP-Agarose are available as well (Rp- and Sp-2'-AHC-cGMPS-Agarose, Cat. Nos. A 051 & A 052). For immobilized cGMP or cAMP with other spacer types, attachment positions, different immobilization techniques or on other gels please inquire.

Specification: Suspension in 30 mM Na₂HPO₄ buffer (pH 7). Ligand density: approximately 6 μmol/ml of settled gel. UV: λ_{max} 252 nm/ suspension in glycol

Stability and Storage: 2'-AEC-cGMP-Agarose has sufficient stability for chromatography at ambient temperature and does not need special care during handling or shipment. Nevertheless, for longer storage periods the gel should be kept in the refrigerator at +4 - +8 °C. **Storage buffer should contain 0.1 % sodium azide for prevention of microbial growth.**

Chromatography: After equilibration with about 10 column volumes of starting buffer the affinity column is loaded with the protein solution, e.g. at 50-200 μl/min. In order to elute other nucleotide-dependent proteins unspecifically bound, the column is washed, e.g. with 1 mM 5'-GMP. For elution of E. coli nucleoside diphosphate kinase it is recommended to wash the column with 10 mM ADP/20mM MgCl₂.

Elution of the target protein is performed by a cyclic nucleotide gradient up to 40 mM. For elution of phosphodiesterases it could be advisable to use the highly hydrolysis-resistant Sp-cGMPS or the stable Rp-cGMPS.

Suitable buffer systems for your special application have to be tested, but phosphate should be not optimal since one essential affinity interaction of cyclic nucleotides towards their target receptors is the cyclic phosphate.

Regeneration can be achieved by a combination of up to 100 mM cGMP and buffer salts or 8 M urea.

Toxicity and Safety: Please keep in mind that the *in vivo* properties of this compound are not sufficiently characterized up to now. Avoid skin contact or ingestion and allow only trained personnel to work with it.

Our products are designed, developed and sold for research purposes only. They are intended for *in vitro* and non-human *in vivo* laboratory applications. Any other use requires approval of health authorities.

Not for drug, household or related uses!

Selected References for Affinity Chromatography:

Corrie, J.E.T; Pizza, C.; Makwana, J.; King, R.W., *Prot. Express. Purif.*, **3**, 417 - 420 (1992): "Preparation and Properties of an Affinity Support for Purification of Cyclic AMP Receptor Protein from Escherichia coli"

Dills, W.L.; Beavo, J.A.; Bechtel, P.J.; Myers, K.R.; Sakai, L.J.; Krebs, E.G., *Biochemistry* **15**, 3724 - 3770 (1976): "Binding of Adenosine 3',5'-Monophosphate Dependent Protein Kinase Regulatory Subunit to Immobilized Cyclic Nucleotide Derivatives"

Dills, W.L.; Beavo, J.A.; Bechtel, P.J.; Krebs, E.G., *Biochem. Biophys. Res. Commun.*, **62**, 70 - 77 (1975): "Purification of Rabbit Skeletal Muscle Protein Kinase Regulatory Subunit Using Cyclic Adenosine- 3':5'- Monophosphate Affinity Chromatography"