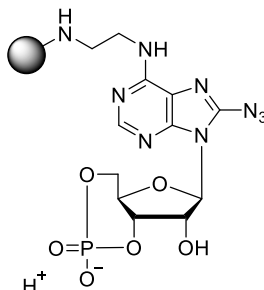


Technical Information about N⁶-(2-Aminoethyl)-cAMP-Agarose

Gel for affinity chromatography of various cyclic nucleotide-responsive proteins

Update: September 03, 2018 HU



Abbreviation: 6-AE-cAMP-Agarose

BIOLOG Cat. No.: A 111

Description: In 6-AE-cAMP-Agarose N⁶-(2-Aminoethyl)adenosine-3', 5'-cyclic monophosphate has been immobilized as an affinity ligand.

Properties: 6-AE-cAMP-Agarose is a gel for affinity chromatography of various cyclic nucleotide-responsive proteins such as protein kinases, phosphodiesterases and others. This ligand is also offered with a longer spacer (6-AH-cAMP-Agarose, Cat. No. A 036) and as a phosphodiesterase-resistant version (Sp-6-AE-cAMPS-Agarose, Cat. No. A 109). For immobilized cAMP with other spacer types, attachment positions or on other gels please inquire.

Specification: Suspension in 30 mM Na₂HPO₄ buffer (pH 7). Ligand density: approximately 6 µmol/ml of settled gel. UV: λ_{max} 266 nm/suspension in glycol.

Stability and Storage: 6-AE-cAMP-Agarose has sufficient stability for chromatography at ambient temperature and does not need special care during handling or shipment. Nevertheless, for longer storing periods the gel should be kept in the refrigerator at 4 - 8 °C. **Storage buffer should contain 0.1% sodium azide for prevention of microbial growth.**

Chromatography: After equilibration with about 10 column volumes of starting buffer the affinity column is loaded with the protein solution, e.g. at 50-200 µl/min. In order to elute other nucleotide-dependent proteins unspecifically bound, the column is washed, e.g. with 1 mM 5'-AMP. For elution of E. coli nucleoside diphosphate kinase it is recommended to wash the column with 10 mM ADP/20mM MgCl₂.

Elution of the target protein is performed by a cyclic nucleotide gradient up to 40 mM. For elution of phosphodiesterases it could be advisable to use the highly hydrolysis-resistant Sp-cAMPS or the stable Rp-cAMPS.

Suitable buffer systems for your special application have to be tested, but phosphate should be not optimal since one essential affinity interaction of cyclic nucleotides towards their target receptors is the cyclic phosphate.

Regeneration can be achieved by a combination of up to 100 mM cAMP and buffer salts or 8 M urea.

Toxicity and Safety: Please keep in mind that the *in vivo* properties of this compound are not sufficiently characterized up to now. Avoid skin contact or ingestion and allow only trained personnel to work with it.

Our products are designed, developed and sold for research purposes only. They are intended for *in vitro* and non-human *in vivo* laboratory applications. Any other use requires approval of health authorities.

Not for drug, household or related uses!

Selected References for 6-AE-cAMP-Agarose:

Murashima, S.; Tanaka, T.; Hockman, S.; Manganiello, V., *Biochemistry*, **29**, 5285 - 5292 (1990): "Characterization of Particulate Cyclic Nucleotide Phosphodiesterases from Bovine Brain: Purification of a Distinct cGMP-stimulated Isoenzyme"