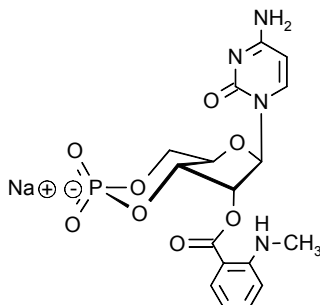


Technical Information about MANT-cCMP

Update: January 14, 2008 AI



Abbreviation: MANT-cCMP

Formula	CAS No.	Molecular Weight	UV	BIOLOG Cat. No.
C ₁₇ H ₁₈ N ₄ O ₈ P·Na	[pending]	460.3	λ _{max} 253 nm / ε 15000 / pH 7	M 053

Name: 2'- O- (N'- Methylanthraniloyl)cytidine- 3', 5'- cyclic monophosphate

Description: MANT-cCMP is an analogue of cyclic CMP in which the ribose 2'-hydroxy group is esterified by the fluorescent methylisatoic acid.

Properties: Membrane-permeant, fluorescent analogue with λ_{exc} 350 nm and λ_{em} 441 nm, potentially suitable for phosphodiesterase studies. The compound is expected to show a decrease in fluorescence when cleaved by PDE.

Specification: Lyophilized or crystallized sodium salt. The free acid or other salt forms are available upon request. Equal concentrations of MANT-cCMP can appear very different in volume due to sensitivity of the lyophilized form to humidity. The compound can even contract to small volume droplets. Normally the product is located in the conical bottom of the tube. Micromolar quantities are determined by UV at λ_{max}.

Purity: Typical analysis is better than 98% (HPLC / UV / 253 nm). The product is not sterile and has not been tested for endotoxins.

Solubility: MANT-cCMP is soluble in water (≥ 13 mM). Please rinse tube walls carefully and preferably use ultrasonic or vortex to achieve total and uniform mixing. When opening the tube please make sure that no substance is lost within the cap.

Stability and Storage: MANT-cCMP is chemically rather stable and does not need special care during handling or shipment. Nevertheless, we recommend that the compound should be stored in the freezer, for longer storage periods preferably in freeze-dried form.

Toxicity and Safety: Since cCMP could have multiple tasks in every organism, it is not unlikely that its analogues could interfere with many cell regulation processes *in vivo*. However, due to the rather small quantities to work with, no health hazards have been reported. Nevertheless please keep in mind, that the *in vivo* properties of this compound are not sufficiently characterized up to now. Avoid skin contact or ingestion and allow only trained personnel to handle the product.

Our products are designed, developed and sold for research purposes only! They are intended for *in vitro* and nonhuman *in vivo* laboratory applications. Any other use requires approval of health authorities.

Not for drug, household or related uses!

References for MANT-cCMP: MANT-cCMP is a new structure which has been synthesized by BIOLOG LSI for the first time. There are no corresponding references available at the moment.

Selected Reference for Related Cyclic Nucleotides:

Hiratsuka, T., *J. Biol. Chem.*, **257**, 13354 - 13358 (1982): "New Fluorescent Analogs of cAMP and cGMP Available as Substrates for Cyclic Nucleotide Phosphodiesterase"