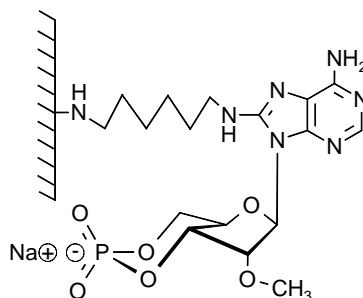


Technical Information about 8- (6- Aminohexylamino)- 2' - O- methyl- cAMP- Agarose

Gel for affinity chromatography of cAMP-responsive proteins, such as Epac and certain phosphodiesterases

Update: July 12, 2010 AI



Abbreviation: **8-AHA-2'-O-Me-cAMP-Agarose**

BIOLOG Cat. No.: A 057

Legal information: The Reagent is subject to patent application n° EP 02077219.0 and foreign equivalents. The Reagent and any improvements are owned and licensed by The UMCU/ UMCU Holding Pharmaceuticals. The Reagent is sold under limited, non transferable and non exclusive licence from The UMCU/ UMCU Holding for research purposes only, to the exclusion of any commercial use, transfer or otherwise sale of this Reagent or its components or derivatives to a third party. Use or sale of Reagent for any commercial purposes requires a commercial license from The UMCU - Universiteitsweg 100, Utrecht, The Netherlands / UMCU Holding - Yalelaan 40, Utrecht, The Netherlands.

Description: In 8-AHA-2'-O-Me-cAMP-Agarose 8-(6-Aminohexylamino)-2'-O-methyladenosine-3', 5'-cyclic monophosphate has been immobilized as an affinity ligand.

Properties: 8-AHA-2'-O-Me-cAMP-Agarose is a gel for affinity chromatography of various cAMP-responsive proteins, especially those which tolerate modification of the ribose 2'-hydroxy group, such as the exchange protein activated by cyclic AMP (Epac) and certain phosphodiesterases. For immobilized cGMP or cAMP with other spacer types, attachment positions, different immobilization techniques or on other gels please inquire.

Specification: Suspension in 30 mM Na₂HPO₄ buffer (pH 7), containing 0.1 % sodium azide as preservative. Ligand density: approximately 6 µmol/ml of settled gel. UV: λ_{max} 273 nm/suspension in glycol.

Stability and Storage: 8-AHA-2'-O-Me-cAMP-Agarose has sufficient stability for chromatography at ambient temperature and does not need special care during handling or shipment. Nevertheless, for longer storing periods the gel should be kept in the refrigerator at 4 - 8 °C. Storage buffer should contain azide for prevention of microbial growth.

Chromatography: After equilibration with about 10 column volumes of starting buffer the affinity column is loaded with the protein solution, e.g. at 50-200 µl/min. In order to elute other nucleotide-dependent proteins unspecifically bound, the column is washed, e.g. with 1 mM 5'-AMP. For elution of E. coli nucleoside diphosphate kinase it is recommended to wash the column with 10 mM ADP/20mM MgCl₂.

Elution of the target protein is performed by a cyclic nucleotide gradient up to 40 mM. For elution of phosphodiesterases it could be advisable to use the highly hydrolysis-resistant Sp-cAMPS or the stable Rp-cAMPS.

Suitable buffer systems for your special application have to be tested, but phosphate should be not optimal since one essential affinity interaction of cyclic nucleotides towards their target receptors is the cyclic phosphate.

Regeneration can be achieved by a combination of up to 100 mM cAMP and buffer salts or 8 M urea.

Toxicity and Safety: Please keep in mind that the *in vivo* properties of this compound are not sufficiently characterized up to now. Avoid skin contact or ingestion and allow only trained personnel to work with it.

Our products are designed, developed and sold for research purposes only. They are intended for *in vitro* and non-human *in vivo* laboratory applications. Any other use requires approval of health authorities.

Not for drug, household or related uses!

Selected References for 8-AHA-2'-O-Me-cAMP-Agarose:

Kovanich, D.; van der Heyden, M.A.G.; Aye, T.T.; van Veen, T.A.B.; Heck, A.J.R.; Scholten, A., *ChemBioChem*, **11**, 963 - 971 (2010): "Sphingosine Kinase Interacting Protein is an A-Kinase Anchoring Protein Specific for Type I cAMP-dependent Protein Kinase"

Aye, T.T.; Mohammed, S.; van den Toorn, H.W.P.; van Veen, T.A.B.; van der Heyden, M.A.G.; Scholten, A.; Heck, A.J.R., *Mol. Cell. Proteomics*, **8**, 1016 - 1028 (2009): "Selectivity in Enrichment of cAMP-dependent Protein Kinase Regulatory Subunits Type I and Type II and Their Interactors Using Modified cAMP Affinity Resins"

Borland, G.; Gupta, M.; Magiera, M.M.; Rundell, C.J.; Fuld, S.; Yarwood, S.J., *Mol. Pharmacol.*, **69**, 374 - 384 (2006): "Microtubule-associated Protein 1B-Light Chain 1 Enhances Activation of Rap1 by Exchange Protein Activated by cyclic AMP but not Intracellular Targeting"